

# GISMobile 1

## System for mobile mapping

- Rapid lidar surveying with georeferenced panoramic images
- Integrated INS and GNSS
- Easy mounting and fast setup
- Lidar with up to 700,000 points per second
- Wireless operation
- Compact body
- Works without odometer



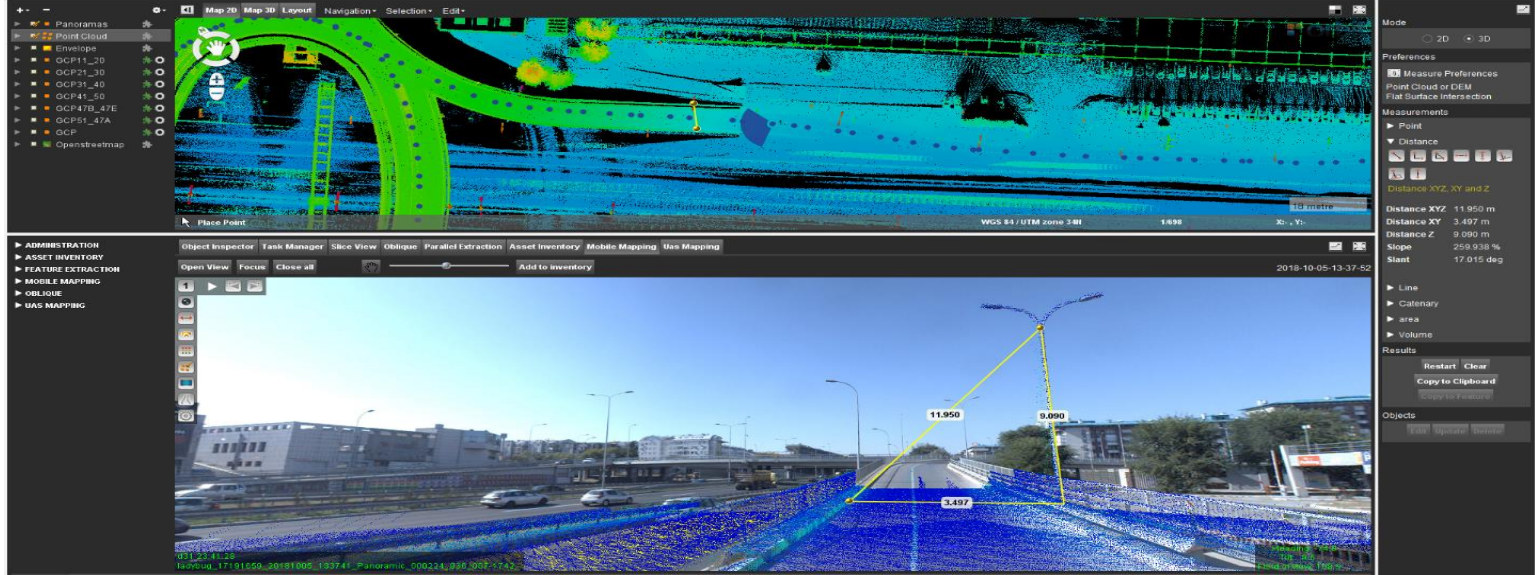
## Increase your productivity

- Significant increase of productivity in GIS data collection with low investment in equipment
- A combination of high-resolution point cloud with panoramic images allows realistic presentation of features without leaving your office

## Applications

- Mapping and GIS data collection
- 3D modelling
- Asset inventory
- Transportation safety
- Construction
- Railways mapping
- City modelling
- Mining
- Utilities
- Environment protection





### System Specifications

Operating temperature	0° to 45°C
Dimensions	49 cm × 30 cm × 88 cm
Power supply	12 V – 36 V DC
Weight	18 kg

### Laser Components

Laser Beams	32
Rotational Field-of-View	360°
Vertical Field-of-View	+10° to -30°
Output	700.000 points / second
Range Precision	±2 cm at 25 m distance (one sigma)
Safety	Class 1, eye-safe

### Imaging Components

Panoramic camera	Ladybug 5
Imaging Sensor	Sony ICX655 CCD × 6, 2/3"
Field-of-View	90% of full sphere
Spherical Distance	Calibrated from 2 m to infinity
Megapixels	30 MP (5 MP × 6 sensors)
Optics	6 high-quality 4.4-mm focal length lenses
Focal Distance	Aprox 200 cm. Objects have sharpness starting from 60 cm to infinity

### Software

Collection & Monitoring	Real-time data display
GIS data collection	Orbit 3DM Feature Extraction